

# TeleFinder™ /User

## About TeleFinder/User

TeleFinder/User is a Macintosh application that connects your Macintosh to TeleFinder bulletin board systems (BBS's). TeleFinder runs on any Macintosh Plus or higher. TeleFinder requires a Hayes compatible modem to connect to a bulletin board. TeleFinder/User is part of the TeleFinder Group Edition package. The package includes bulletin board software, tools for controlling user access privileges, and various utilities. Each program is easy to use and understand.

You'll find business services, customer support and friendly chatter offered through TeleFinder bulletin board systems. A TeleFinder BBS can provide you files to transfer, electronic mail service, public conferences and chat. The person or company operating the BBS selects the services to offer its callers. While some BBS's are open to the public, others remain private.

You're invited to connect to Spider Island Software's support BBS, at (714) 730-5785. Please use the name "Guest" and password "Guest" to log on. There are TeleFinder bulletin boards operating all over the United States, Canada, Japan, Europe and many other locations arounds the world. Many of them advertise their BBS phone numbers on the Spider Island BBS.

## What is this guide for?

This guide helps you get up and running with TeleFinder/User quickly. Getting Started presents a condensed version of the steps you need to take to make a connection to a TeleFinder BBS. It tells you how to transfer files, send mail, and participate in a conference.

## Let's get started!

Open the TeleFinder/User application. You'll see that TeleFinder creates a replica of the Mac desktop. This lets you use a TeleFinder bulletin board using the mouse, movable icons, and sizeable windows. Just click, drag, and open icons to work with files, mail and messages on the BBS. TeleFinder also includes a text editor and the ability to manage files on your hard disk.

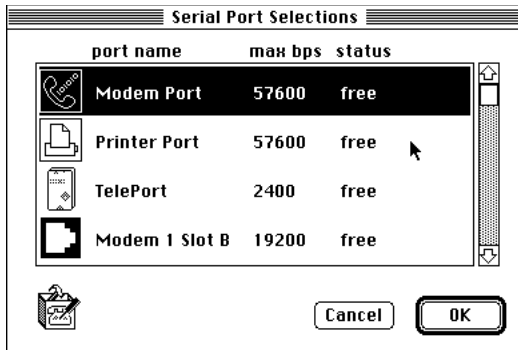
The icons along the bottom of the screen provide many of TeleFinder's commonly used features. Double-click the "Modem Port" icon to use the Auto Dialer. Use the Receive and Send icons to transfer files between your Macintosh and the bulletin board. Use the Trash icon to remove items from your disk or your BBS mailbox. Use the Address icon to maintain a list of users you frequently send mail to. Use the Mail Outbox icon to send mail unattended at predetermined times. You can drag these icons to any position on TeleFinder's desktop.

The following sections tell you how to set up and use the software.

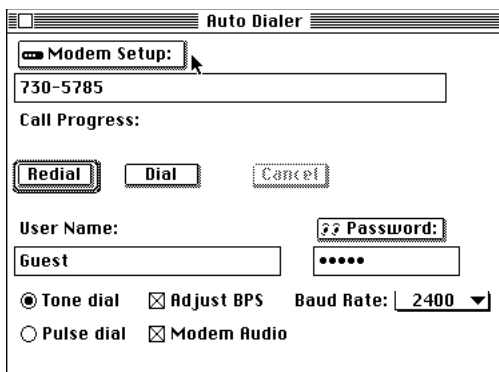
## Setting up TeleFinder

TeleFinder/User uses the Modem Setups file to store settings needed to make a connection to a TeleFinder BBS. These settings configure the modem, set communications parameters, and provide your name and password. You need to perform these steps only once. The program saves the settings once you load them.

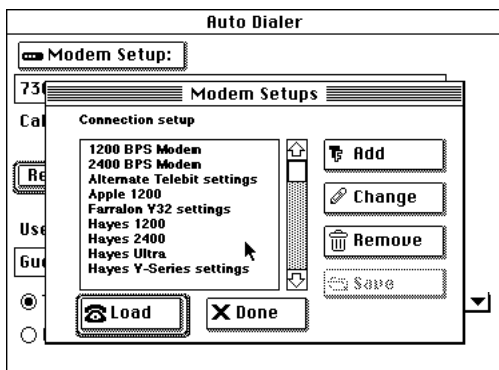
- Select "Change Ports" from the Modem menu. Then select the serial port used for your modem from the serial ports list.



- Open the Auto Dialer window by opening the Modem Port icon. The default location of this icon is the lower left hand part of the desktop.



- Click in the Modem Setup button in the Auto Dialer window.
- Select the connection setup appropriate for your modem from the list.
- Click in the Load button in the Modem Setups dialog. This brings the selected settings into TeleFinder.



- Enter your name, password and phone number in the Auto Dialer.

## Dialing

Click in the Dial or Redial button to place the call. TeleFinder dials the number using your modem and then waits for the BBS to answer your call. If you click in redial and the line is busy, TeleFinder waits a few seconds and then calls again. TeleFinder displays the call progress in the auto dialer window. You normally see the following messages while TeleFinder is dialing.

Waking up the modem...  
Dialing the number...  
Waiting for an answer...  
Connected at 2400 bps. (or 1200, 9600, etc.)

After the modems connect, TeleFinder logs you on to the bulletin board. This is when the bulletin board checks your name and password. The BBS starts this process. You should see these messages displayed in the dialer as log on takes place.

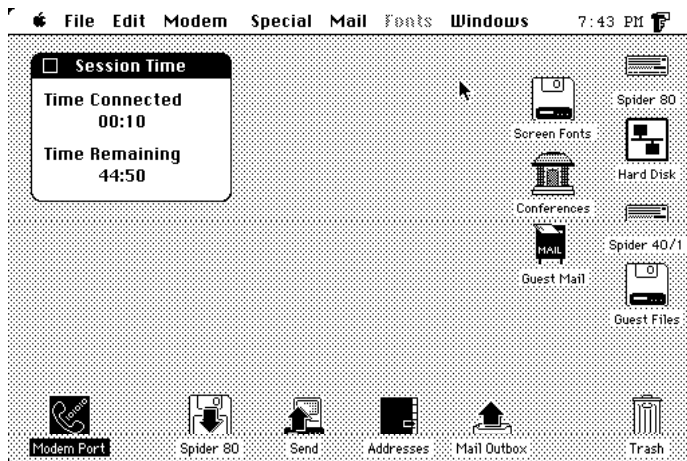
Waiting for the host...  
Sending name and password...  
Waiting for verification...  
Sending confirmation...  
Successful connection!

If the log on fails, it is usually because the modems did not make a good connection. Poor connections often result from using the wrong settings. Load different modem settings into TeleFinder if you have problems connecting.

If your name or password are wrong the BBS sends a "TeleFinder Message" saying that your name or password did not match. Correct the name and password entered in the Auto Dialer and dial again.

## Icons received from the bulletin board

After a successful connection, the BBS sends the icons you have access to. TeleFinder draws these icons on the right hand side of the replica desktop. Double-click on them to open them.



This screen is an example of what you see after connecting to the Spider Island Software BBS. TeleFinder displays the Guest Files icon to provide you access to demos, utilities and public domain software. The Mailbox icon contains your mail. The Conferences icon contains files with news, information and public discussions.

When you connect a "Read Me" document may open on your screen. The operator of the BBS uses this for special announcements. You can save the document as a text file or print it.

The Session Time window shows your current connection time and time remaining.

## Mail is waiting for you

When mail is waiting your mailbox icon shows a letter sticking out of it. No letter means there are no files in your mailbox. Mail remains in your mailbox until you drag it to the Trash icon to remove it.

Your mailbox can contain both messages and files. You can read the messages by opening their icons. Reply to a message by bringing its window to the front. Then select "New Mail Form" from the Mail menu. Use the Mail form to compose, address, and send messages.

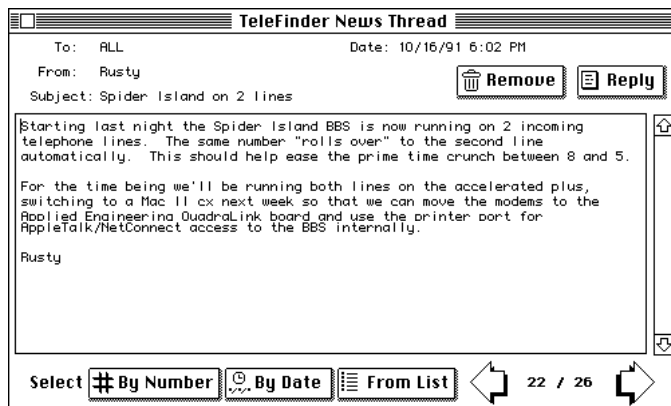
When a file is in your mailbox drag its icon to your disk. This transfers the file to your Macintosh. After the file transfer is complete, you can open the file with the application used to create it.

## Sending mail

Choose "New Mail Form" from the Mail menu. The mail form uses standard Macintosh text editing commands. Address the message by typing a user's name in next to the To button. You can click in the To button to select a name from your address book. After composing your message, click in the Mail button of the Mail window to send it.

## Conferences and message threads

The BBS uses conference icons to organize public discussions. You'll find message thread icons and possibly other conference icons in a conference. Message threads are two-way containers of public messages. You can post messages to them and use them to read messages written by others.



Click in the Reply button to add a question or message to the thread. Use the arrows, By Number, By Date and From List buttons to read different messages in the thread. Remove is active if you are reading a message you posted.

## **Default receive folder**

The Receive icon represents the default folder on one of your disks. Open the Receive icon to select a folder to use as your default folder.

You can drag files from the BBS to this icon to begin a file transfer. After the transfer is complete, a copy of the file will be in the default folder.

## **File information**

Select a file icon then select "Get Info" from the File menu. TeleFinder displays name, size, and date information in the Info window. A description of the file may also be present. The sender of the file must provide the description.

Click on the Receive button to transfer the file to your default folder. The file transfer process begins automatically. Drag the file's icon to a specific folder to transfer it to that location.

## **Sending files**

You can send files to the BBS or to another user via their Drop-Box icon.

Drag a files icon to the Send icon on your screen. That is all that is necessary to begin a file transfer with TeleFinder. After the transfer is complete, there will be an exact copy of the file on the BBS's hard disk. The person who sets up the BBS decides which folder stores the file.

TeleFinder uses Drop-Box icons to send files to the mailboxes of other users. Select the "Get the Drop-box of..." item from the Mail menu. Then enter the user's name and click in the OK button. Then the BBS sends the user's drop-box icon to your desktop. Drag the icon of the file that you want to send to the user's Drop-Box. TeleFinder transfers a copy of the file to the user's Mailbox.

The "Locate a User" function is also useful to get a Drop-Box icon. Select this item from the mail menu and enter a small portion of another user's name. TeleFinder then presents a list of users in the Users List window. Select the correct name from the list. Then click in the Mailbox button of the user list window.

If you plan to send files to a user frequently, save his name in the address book. The address book can get the Drop-Box icon for you.

## **File transfer protocols**

TeleFinder supports XMODEM, XMODEM-CRC, XMODEM-1K and ZMODEM file transfers. Select the file transfer protocol you wish to use from the Special Menu.

ZMODEM file transfers have the advantage of 32 bit CRC's and file recovery. If a ZMODEM file transfer fails to complete, TeleFinder saves the part of the file already received. You can complete the transfer either on another call, or during the same call. Just drag the file to the same location to continue the transfer where it left off.

The XMODEM file transfer protocol does not require flow control and has less overhead than ZMODEM. Use XMODEM when you have small files to transfer, or when you have problems with flow control. XMODEM does not support file recovery.

## **Flow control with V.42**

Flow control regulates the speed of data transfer between two computers. Flow control is very important with high speed modems. Modems that use V.42 or MNP require a hardware handshake modem cable to work properly. This cable is not the same as the standard modem cable. If you have a V.42 or MNP modem use TeleFinder's modem settings labeled "Alternate" or "ALT."

Use the normal settings after you install a hardware handshake modem cable. Data-Spec and others manufacture these cables. Data-Spec calls it the "Hayes V-Series to Mac II" modem cable.

## **Getting more information**

That's all there is to Getting Started! Use this information to connect to your BBS, transfer some files and send mail. The complete TeleFinder/User manual contains more information on the following subjects.

- Creating your own modem settings.
- Details on using the text editor.
- Creating a new topic in a conference window.
- Details on navigating a message thread.
- Trouble Shooting.
- Explanation of the differences in file transfer protocols.
- Locating a user name from the BBS.
- Adding and editing names in the Address Book.
- Using the Mail Outbox to mail files to other users.
- Batch file transfers.

You can reach Spider Island Software by the following means.

Mail:

Spider Island Software  
4790 Irvine Boulevard, Suite 105-347  
Irvine, CA 92720 USA

Fax: 1 (714) 669-1383; Telephone: 1(714) 669-9260; BBS: 1(714) 730-5785; America Online:  
SpiderIsla; CompuServe: 73457,2756